



INFORMATION SERVICES

Discover information you need

Martin Kolman
EBSCO Information Services

Central and Southeast Europe

Phone: + 420 735 755 573

mkolman@ebSCO.com



EBSCO services in a nutshell

#1 Metadata

**Relevancy
ranking**

**Full-text
access**

**Customized
searching**

Integration

**EBSCO
Support**

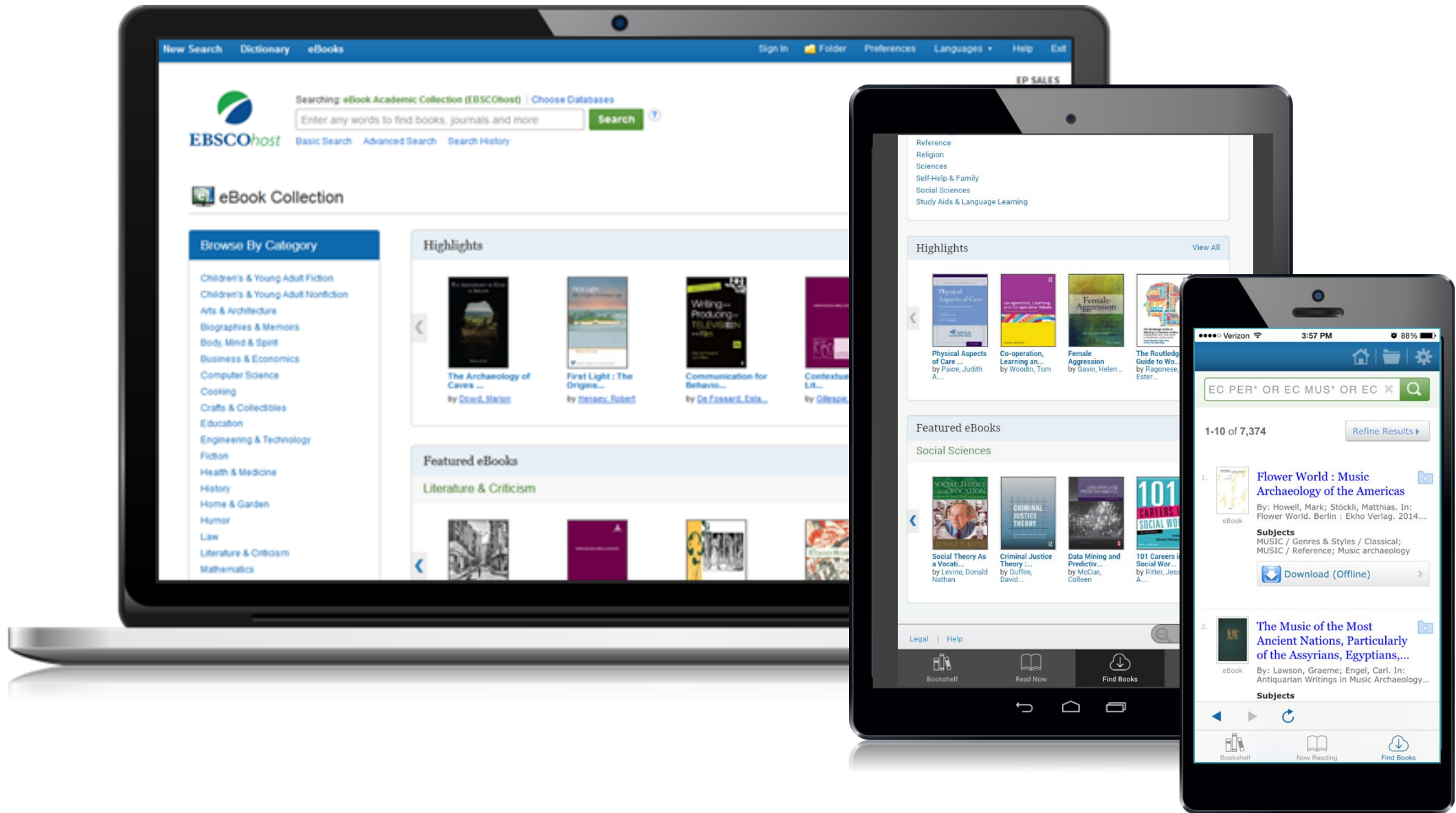


EBSCO

Research

on the Go

EBSCO Mobile





Remote access:

<https://search.ebscohost.com>



Support:

<https://help.ebsco.com/>



?



METADATA – EBSCO CSI and more

- American Chemical Society (SciFinder, Chem Abs)
- American Economic Association (EconLit)
- American Geosciences Institute (GeoRef)
- American Mathematical Society (MathSciNet)
- American Psychological Association (PsycINFO)
- American Statistical Assn (Current Index to Statistics)
- American Theological Library Association (ATLA, etc.)
- APC (Alternative Press Index)
- Assn for Asian Studies (Bibliography of Asian Studies)
- Assn of Christian Librarians (Christian Periodical Index)
- Behavioral Measurement Database Services (HaPI)
- Brepols Publishers (IMB, L'Annee Philologique, etc.)
- Brill Academic Publishers (Index Islamicus)
- British Library (AMED)
- Buros Center (MMY, TiP)
- CABI (CAB Abstracts, Global Health, etc.)
- Cinahl Information Systems (CINAHL)
- Clarivate (BIOSIS Previews, Zoological Abstracts)
- Columbia (Avery Index to Architectural Periodicals)
- EBSCO (H.W. Wilson, Historical Abs, SPORTDiscus etc.)
- Elsevier (Compendex, EMBASE, GEOBASE)
- Education Resources Information Center (ERIC)
- Harvard (Anthropological Literature)
- IET (Inspec)
- IFIS (Food Science & Technology Abstracts)
- Index to Jewish Periodicals (IJP)
- INION (Russian Academy of Sciences Bibliographies)
- INST-CNRS (FRANCIS, PASCAL)
- IPSA (International Political Science Abstracts)
- Leibniz-Zentrum für Psychologische Info (PSYINDEX)
- Library of Congress (MCLC)
- Mary M. Schmidt (Index to 19th-Century AAP)
- Modern Language Association (MLA Int'l Bibliography)
- Music Library Association (Index to Printed Music)
- National Agricultural Library (AGRICOLA)
- National Assn of Social Workers (Social Work Abstracts)
- National Library of Medicine (PubMed/MEDLINE)
- National Technical Information Service (NTIS)
- NISC South Africa (Africa-Wide Information, etc.)
- Philosopher's Information Center (Philosophers Index)
- ProQuest (Sociological Abstracts, etc.)
- Répertoire International de Littérature Musicale (RILM)
- Répertoire International de la Presse Musicale (RIPM)
- Répertoire International des Sources Musicale (RISM)
- Royal Anthropological Institute (Anthropological Index)
- Royal Society of Chemistry (Analytical Abstracts)
- Science Society, et al (History of STM)
- Smithers Information Limited (Polymer Library)
- UCLA (Hispanic American Periodicals Index)
- University of California, Berkeley (Chicano Database)
- University of Illinois (ABSEES)
- University of Toronto (Iter Bibliography)
- University of Tulsa (Petroleum Abstracts)
- vLex (vLex Global, vLex Europe)
- William S. Hein & Co (HeinOnline)
- Wiley & Sons, Ltd. (Cochrane)

“If PsycINFO were included in discovery services, users...would only be scratching the surface. We do not wish to contribute (to this)... EDS (EBSCO Discovery Service) is the only one (where we) can be assured that it is stimulating use [of PsycINFO], not substituting for it.”



Linda Beebe
Senior Director (now retired)
PsycINFO

EBSCO RELEVANCY RANKING

Vyhledávání:

Klíčové slovo ▾

social media and political campaigns



Hledání



[Základní vyhledávání](#)

[Rozšířené vyhledávání](#)

[Historie hledání](#)



Podrobný záznam



Plný text PDF (1.6MB)



uložit do Citace.com

Hledat podobné výsledky

pomocí vyhledávání SmartText.

[◀ Seznam výsledků](#) | [Upřesnit vyhledávání](#)

◀ 2 z 481,466 ▶

Role of **Social Media** in Political Campaigning and its Evaluation Methodology: A Review.

Autoři: Kumar, K. Anil¹ anilkumar.k2015@vit.ac.in
Natarajan, Subhashree² subhashree.p@vit.ac.in

Zdroj: [Global Management Review](#). May2016, Vol. 10 Issue 3, p1-12. 12p. 1 Chart.

Typ dokumentu: Article

Tematické termíny: [Social media](#)
[Political campaigns](#)
[Acquisition of data](#)
[Political communication](#)
[Political parties](#)

Klíčová slova uvedená autorem: [Evaluation methodology](#)
[Political campaigning](#)
[Politics](#)
[Voters](#)

Kódy NAICS/oborů: [813940 Political Organizations](#)

Abstrakt: The empowering growth of internet has created a pathway for politics to use **social media** strategy. **Social media** has changed the approach of **political** communication and politicians and **political parties** are opting **social media** for new way of connectin with voters. This paper focuses on evolving the **social media role in political campaign** in India and deliberates on the unique methods to collect data. Various marketing approaches and their characteristics are connected with **political campaigning** and

Mapping in Action

learning aids

- *learning aids* maps to:
 - *educational media* (ERIC)
 - *educational resources* (GeoRef)
 - *instructional materials* (MLA International Bibliography)
 - *instructional media* (PsycINFO)
 - *teaching aids & devices* (Education Abstracts, Education Source)
 - *teaching materials* (MeSH/MEDLINE/PubMed, CINAHL)

EBSCO Discovery Service



- Single search box
- Sophisticated search technology
- Access to all library and external resources
- Branding and integration

Dentistry & Oral Sciences Source™



Dentistry & Oral Sciences Source Full Text Compared

FULL-TEXT SOURCES	TOTAL	UNIQUE*
Full-Text Journals & Magazines	264	254
Full-Text Books & Monographs	31	31

* Not available as full text in any version of *Academic Search*, *CINAHL* or *MEDLINE*

Strong Collection of Many Full-Text Journals with NO Embargo, including:



Strong Collection of Many Full-Text Journals with NO Embargo, including:



Strong Collection of Many Full-Text Journals with NO Embargo, including:





EBSCO Health |
CINAHL Plus with Full Text

5,3 million records

Records going back to 1937

Covers wide range of topics

CINAHL Versions

	Full-Text Journals
<i>CINAHL with Full Text</i>	631
<i>CINAHL Plus with Full Text</i>	778

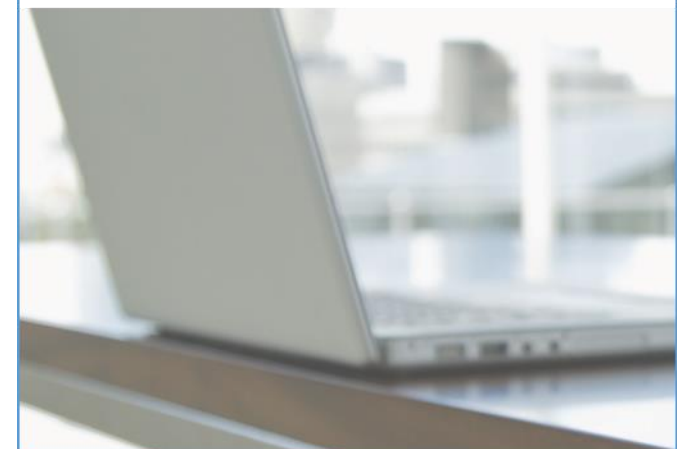
CINAHL Indexing Quality is Unmatched Among Nursing & Allied Health Databases

- Indexing is done by highly-qualified medical indexers
- Terms are assigned in order of most relevant to least relevant, which is leveraged by the search engine
- Major headings and Minor headings are distinguished, which is leveraged by the search engine
- CINAHL has the authoritative controlled vocabulary for nursing & allied health research, which is leveraged by the search engine
- Competing databases do not provide comparable indexing

CINAHL Indexing Is Far More Comprehensive Than Other Nursing & Allied Health Databases

- CINAHL is a comprehensive index, and the definitive index, of the world's nursing & allied health journals
- 5,470+ journals indexed covering nursing & allied health
 - Also includes other ancillary subject areas that support nursing & allied practice (e.g., biomedicine, health services administration, public health, etc.)

?





DynaMed Plus[®]

SUMMARY OF FEATURES

DynaMed Plus[®]



**Evidence Based
Content**



Point of Care Use



Expert Reviewers



Daily Updates



Drug Content



Graphics & Images



Global Guidelines



Mobile App

DynaMed Plus Evidence-Based Methodology



Identify the Evidence



Select the Best



Critically Appraise



Objectively Report



Synthesize the Evidence



Report Conclusions and Make Recommendations



Adjust Conclusions When New Evidence is Published

Editorial Leadership



Bill Aird, MD
Deputy Editor of Hematology,
Endocrinology, and Nephrology
Internist, Beth Israel Deaconess
Medical Center
Professor of Medicine,
Harvard Medical School



Brian S. Alper, MD, MSPH, FAAFP
Vice President of Innovations
and EBM Development
Evidence-based Medicine Expert



Scott Barron, MD, FAAP
Deputy Editor of Pediatrics
Pediatric Emergency Physician,
Nemours Children's Hospital
Associate Professor, University of
Central Florida College of Medicine

Editorial Leadership



Peter Oettgen, MD, FACC FAHA
Editor in Chief, Deputy Editor
of Cardiology
Cardiologist, Beth Israel Deaconess
Medical Center Associate Professor,
Harvard Medical School



Alexander Rae-Grant, MD FRCP
Deputy Editor of Neurology
Neurologist, Cleveland Clinic
Professor of Medicine at the Cleveland Clinic
Lerner College of Medicine



Terence K. Trow, MD, FACP, FCCP
Deputy Editor of Pulmonary,
Critical Care and Sleep
Pulmonologist, Yale New Haven Hospital
Associate Professor of Medicine
at the Yale University School of Medicine

Editorial Leadership



Alan Ehrlich, MD
Executive Deputy Editor
Family Practice Physician,
University of Massachusetts
Medical School
Assistant Clinical Professor,
University of Massachusetts
Medical School



Ruth Hertzman-Miller
Deputy Editor of
Systematic Literature Surveillance
Internist, Hebrew Senior Life
Case Western Reserve University
School of Medicine



Vito Iacoviello, MD, FIDSA
Deputy Editor of Infectious Diseases,
Immunology and Rheumatology
Chief of the Division of Infectious Diseases
at Mount Auburn Hospital
Assistant Professor of Medicine at Harvard
Medical School and Dartmouth Medical School

DynaMed Plus

Modern, intuitive and responsive design



DynaMed Plus

Powerful search technology



DynaMed Plus

EHR integration



DynaMed Plus

Alerts when topics change



DynaMed Plus

Link out to full text



DynaMed Plus

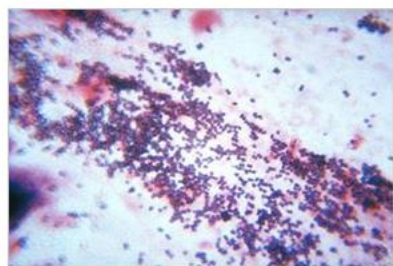
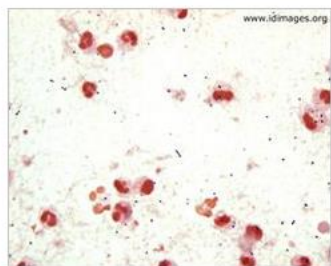
pneumonia

X

Search

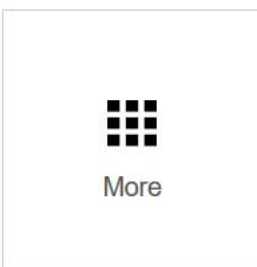
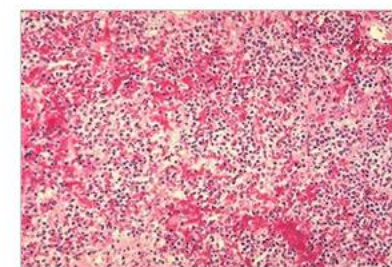
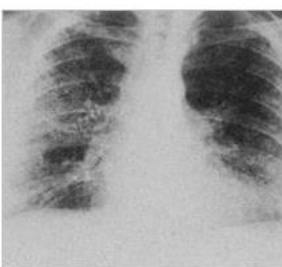
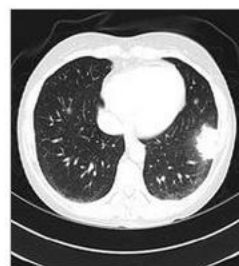
Graphics and calculators linked to topics

Results Images Calculators



Criteria for Pneumonia Severity Index

Criteria	0	1	2	3	4	5	6	7	8	9	10	11	12	13	14	15	16	17	18	19	20	
Age																						
BMI																						
Comorbidities																						
ECG																						
Lab																						
WBC																						
Urea																						
CRP																						
Procalcitonin																						
ProBNP																						
Prothrombin time																						
INR																						
PT																						
APACHE II																						
SOFA																						
qSOFA																						
APACHE II																						
SOFA																						
qSOFA																						



DynaMed Plus

Clicking on a link provides levels of evidence and guidelines behind each recommendation

DynaMed Plus includes strong and weak recommendations

Search

Follow Print E-mail CME

- ▼ Overview and Recommendations
 - Background
 - Evaluation
 - Management
 - Prevention
- Related Summaries
 - ▶ General Information
 - ▶ Epidemiology
 - ▶ Etiology and Pathogenesis
 - ▶ History and Physical
 - ▶ Diagnosis
 - ▶ Treatment

- Offer beta-blockers for patients undergoing cardiac surgery to prevent perioperative atrial fibrillation (Strong recommendation).
- Consider the following medications for the prevention of atrial fibrillation in patients with cardiovascular disease:
 - angiotensin-converting enzyme inhibitors or angiotensin receptor blockers (Weak recommendation)
 - statins, particularly in those with heart failure or who have had or are undergoing coronary artery bypass grafting surgery (Weak recommendation)

Related Summaries

- Thromboembolic prophylaxis in atrial fibrillation
- Cardioversion of atrial fibrillation
- Rate control in atrial fibrillation
- Rhythm control in atrial fibrillation
- Ablation therapy for atrial fibrillation
- Physician Quality Reporting System Quality Measures

Atrial fibrillation

Search

Search Within Text

Atrial fibrillation

Treatment / Treatment overview

- ▶ Diagnosis
- ▼ Treatment
 - Treatment overview
 - Treatment setting
 - Rate control
 - Cardioversion
 - Rhythm control
 - Rate vs. rhythm control
 - Thromboembolic prophylaxis
 - ▶ Activity
 - ▶ Surgery and procedures
 - Follow-up

- fibrillation for complete atrial fibrillation
- for thromboembolic prophylaxis
 - see overview of thromboembolic prophylaxis
 - Thromboembolic prophylaxis
 - percutaneous left atrial appendage closure
 - consider LAA occlusion in patients at risk for stroke who have contraindications for long-term anticoagulation treatment, such as previous life-threatening bleeding event without reversible cause (ESC Class IIb, Level A)
 - surgical excision or occlusion of left atrial appendage may be considered in patients having open heart surgery (ACC/AHA Class IIb, Level C; ESC Class IIb, Level B) or thorascopic atrial fibrillation surgery (ESC Class IIb, Level B)
 - consider left atrial appendage closure (excision or ablation) as part of surgical ablation for atrial fibrillation if no increased risk in patients having other surgeries, including any (CCS Conditional recommendation, Low-quality evidence)
 - mitral valve surgery
 - aortic valve surgery
 - coronary artery bypass graft (CABG) surgery

DynaMed Plus provides links to the levels of evidence and the guidelines behind each recommendation

Global Evidence Sources

Search Within Text



▶ **Diagnosis and Staging**

▶ **Management**

▼ **Prognosis**

Progression to multiple myeloma

▼ Risk stratification scores

Mayo model

Spanish PETHEMA model

Cytogenetic risk stratification

Other prognostic risk factors

Prevention and Screening

▶ **Guidelines and Resources**

Patient Information

▶ **ICD-9/ICD-10 Codes**

▶ **References**

Smoldering myeloma

Follow
 Print
 E-mail
 CME

Prognosis / Risk stratification scores / Spanish PETHEMA model

Spanish PETHEMA model

- **Spanish Programa de Estudio y Tratamiento de las Hemopatías Malignas (PETHEMA) model may identify patients with smoldering myeloma and monoclonal gammopathy of unknown significance at increased risk of progression to active myeloma**
 - based on retrospective cohort study
 - 500 patients (median age 70 years) with smoldering myeloma (SM) and monoclonal gammopathy of unknown significance (MGUS) were followed for median 56 months
 - 93 patients had SM, 407 with MGUS
 - SM scores 1 point each for
 - ≥ 95% abnormal plasma cells/bone marrow plasma cells (aPC/BMPC)
 - evidence of immunoparesis (reduction of ≥ 1 uninvolved immunoglobulin isotypes less than lower limit of normal)
 - MGUS score 1 point each for
 - ≥ 95% aPC/BMPC
 - DNA aneuploidy
 - score for risk of progression
 - 0 risk factors - low risk
 - 1 risk factor - intermediate risk

DynaMed Plus[®]

Partnerships



MICROMEDEX SOLUTIONS



EvidenceAlerts
McMaster PLUS[™] and *DynaMed Plus*[®]



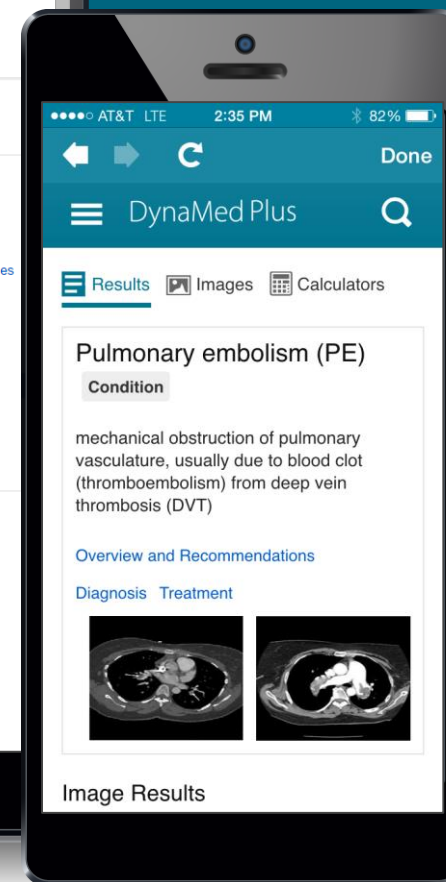
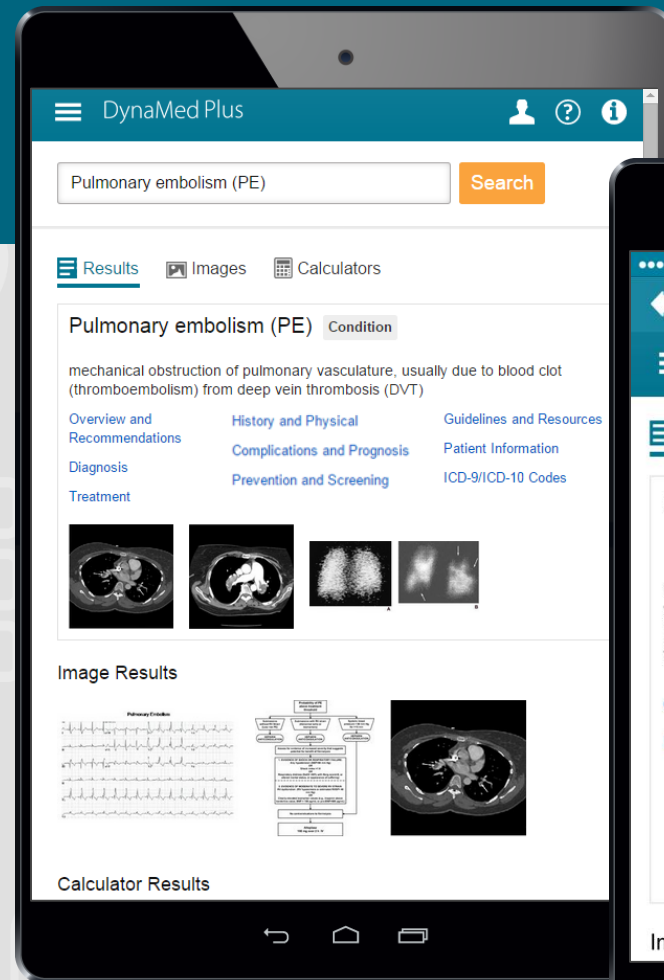
Mobile App available for iOS and Android devices.



Download on the
App Store



Get it on
Google play



DynaMed Plus[®]

KLAS 2016 CDS report

Clinical Decision Support KLAS Report - 2016

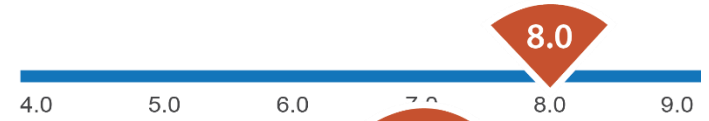
POINT-OF-CARE REFERENCE TOOLS: PERFORMANCE AND VALUE

OVERALL PRODUCT QUALITY

[1-9 scale]

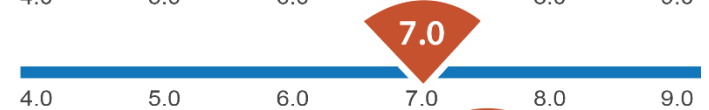
EBSCO

DynaMed and DynaMed Plus



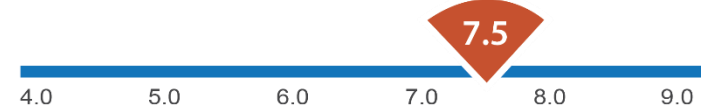
Wolters Kluwer

UpToDate



Elsevier

ClinicalKey



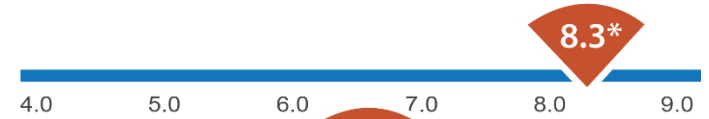
MONEY'S WORTH

** Limited Data*

[1-9 scale]

EBSCO

DynaMed and DynaMed Plus



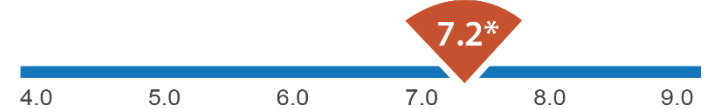
Wolters Kluwer

UpToDate



Elsevier

ClinicalKey



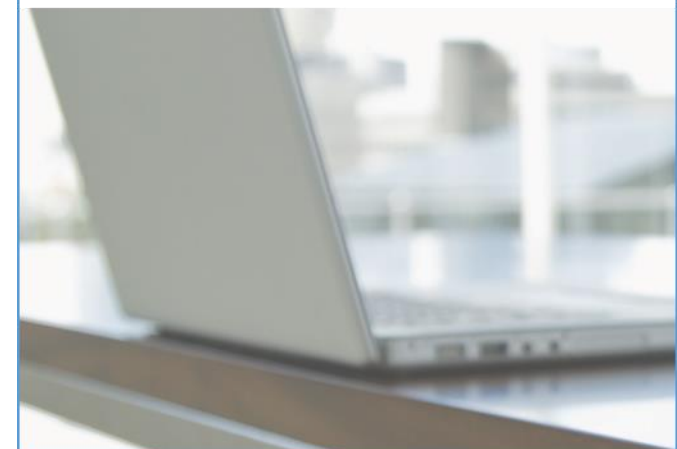
*Clinical Decision Support 2016: Providers Expect EMRs to Drive CDS Impact.

November 2016 © KLAS Enterprises, LLC. All rights reserved. www.KLASresearch.com

Clinical Decision Support 2011: Understanding the Impact, November 2011. © KLAS Enterprises, LLC. All rights reserved.

Clinical Decision Support 2013: Sizing up the competition, December 2013. © KLAS Enterprises, LLC. All rights reserved.

?



DEMO



EBSCO tutorials | YouTube

EBSCO Information Services Subscribe 1,675

Home Videos Playlists Channels Discussion About

Uploads

- EBSCO Discovery Service for Corporations**
32 views • 3 weeks ago
- WEBINAR: Build Your Graphic Novel Collection: Advice by ...**
33 views • 3 weeks ago
- Relevancy Ranking**
185 views • 1 month ago
- WEBINAR: DynaMed Plus® as the Next Generation DynaMed**
40 views • 2 months ago
- WEBINAR: Saving the Brain: A Community Hospital's Journey i...**
30 views • 2 months ago

Featured Channels

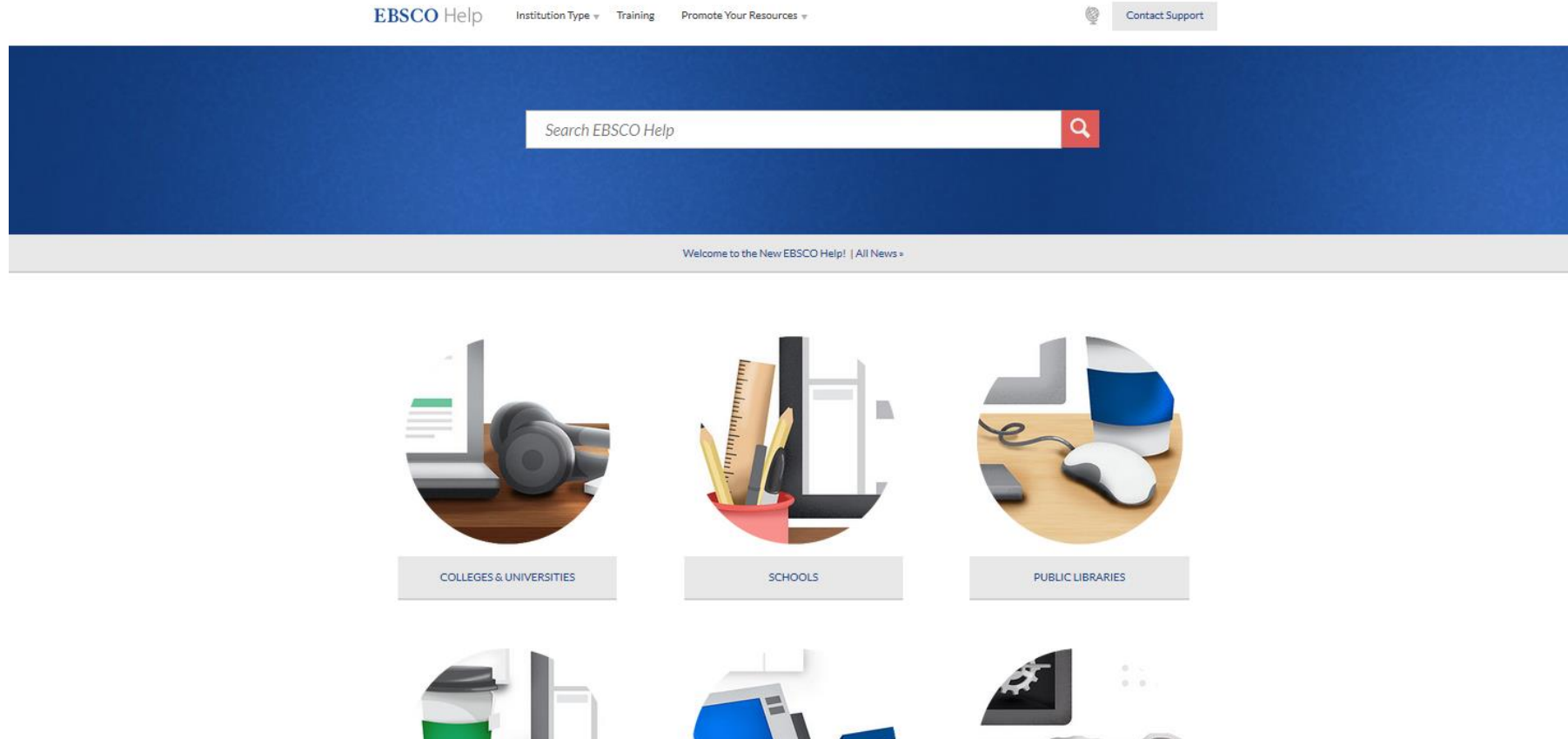
- EBSCO Support Subscribe
- EBSCO Türkiye Subscribe
- NoveList Subscribe

Related channels

- ProQuest Training Subscribe

<https://www.youtube.com/user/ebscopublishing>

EBSCO Help page



<https://help.ebsco.com/>

Thank you for your time!

Martin Kolman
EBSCO Information Services
Central and Southeast Europe
Phone: + 420 735 755 573
mkolman@ebSCO.com

Pavel Synek
Jan Luprich
Dalibor Parač
Zuzana Vitusová
Markéta Sejkotová